

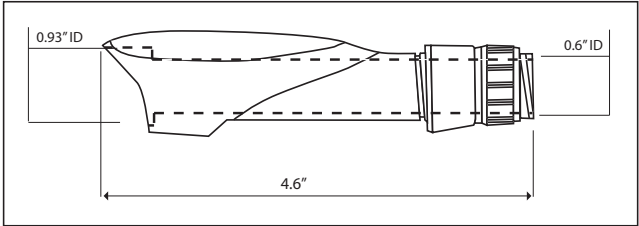
Hood Color		
Stainless Steel	Black	TiGrey
GCP16C-BST	GCP16C-B-BST	GCP16C-C-BST
\$16.00	\$16.75	\$17.20



Comfort Palm Spin



Length		I.D.	
MM	INCH	MM	INCH
116.8	4.6	14.8	0.60



GBS BLANK-EXPOSED SPINNING REEL SEATS



GBS18C-B

- Blank exposure allows your thumb to be in direct contact with the blank for maximum sensitivity to strikes or bottom contact.
 - The rear hood has an integrated contour that allows maximum comfort in the uplocking configuration preferred by most spinning anglers.
- I.D. increments of 1.0 mm accommodate today's most popular blank O.D.s.

GBS16C-B-SIZE \$28.55

GBS18C-B-SIZE \$34.25



	Color	Length		I.D.		Weight	
		mm	inch	mm	inch	grams	oz
Size 16	GBS16C-B-090	134.8	5.30	9.0	0.354	31	1.09
	GBS16C-B-100	134.8	5.30	10.0	0.394	31	1.09
	GBS16C-B-110	134.8	5.30	11.0	0.433	31	1.09
	GBS16C-B-120	134.8	5.30	12.0	0.472	31	1.09
	GBS16C-B-130	134.8	5.30	13.0	0.512	31	1.09
	GBS16C-B-140	134.8	5.30	14.0	0.551	31	1.09
Size 18	GBS18C-B-110	155.0	6.10	11.0	0.433	42	1.48
	GBS18C-B-120	155.0	6.10	12.0	0.472	42	1.48
	GBS18C-B-130	155.0	6.10	13.0	0.512	42	1.48
	GBS18C-B-140	155.0	6.10	14.0	0.551	42	1.48

Minima Split Reel Seats

Reel Seats

MODEL GMC

MINIMA LIGHT WEIGHT CASTING REEL SEATS

- Superior lightweight graphite/nylon casting reel seats.
- **Pachay** minima casting reel seats are 30% lighter than conventional trigger reel seats.
- Allows the angler to comfortably hold the reel with maximum rod blank contact.
- Combine with a split rear grip and minimalist foregrip for the lightest handle system.
- Threaded body: length = 44.2mm (1.740") • I.D. = 15.5mm (0.610")
- Fixed hood: length = 50.0mm (1.969")

Hood Color			FIXED HOOD I.D.	
Stainless Steel	Black	TiGrey	mm	inch
GMC16C-095	GMC16C-B-095	GMC16C-C-095	9.5	0.374
GMC16C-100	GMC16C-B-100	GMC16C-C-100	10.0	0.394
GMC16C-105	GMC16C-B-105	GMC16C-C-105	10.5	0.413
GMC16C-110	GMC16C-B-110	GMC16C-C-110	11.0	0.433
GMC16C-115	GMC16C-B-115	GMC16C-C-115	11.5	0.453
GMC16C-120	GMC16C-B-120	GMC16C-C-120	12.0	0.472
GMC16C-125	GMC16C-B-125	GMC16C-C-125	12.5	0.492
GMC16C-130	GMC16C-B-130	GMC16C-C-130	13.0	0.512
GMC16C-135	GMC16C-B-135	GMC16C-C-135	13.5	0.531
GMC16C-140	GMC16C-B-140	GMC16C-C-140	14.0	0.551
GMC16C-145	GMC16C-B-145	GMC16C-C-145	14.5	0.571
GMC16C-150	GMC16C-B-150	GMC16C-C-150	15.0	0.591
GMC16C-155	GMC16C-B-155	GMC16C-C-155	15.5	0.610

\$11.00

\$11.10

\$12.15

MODEL GMS MINIMA

LIGHT WEIGHT SPLIT SPINNING REEL SEATS

- Superior lightweight graphite / Nylon Spinning reel seats.
- **PACBAY** Minima Spinning reel seats are 10%- 20% lighter than conventional spin reel seats.
- Allows the angler to comfortably hold the reel with maximum contact on the rod blank.
- Cushioned hoods are available in natural stainless steel, black, or our TiGrey color.
- Combine with a split rear grip and minimum foregrip for the lightest handle system.
- Threaded Body: Length = 44.2mm (1.740") • I.D. = 15.5mm (0.610")
- Fixed Hood: Length = 50.0mm (1.969")

Hood Color			FIXED HOOD I.D.	
Stainless Steel	Black	TiGrey	mm	inch
GMS16C-095	GMS16C-B-095	GMS16C-C-095	9.5	0.374
GMS16C-100	GMS16C-B-100	GMS16C-C-100	10.0	0.394
GMS16C-105	GMS16C-B-105	GMS16C-C-105	10.5	0.413
GMS16C-110	GMS16C-B-110	GMS16C-C-110	11.0	0.433
GMS16C-115	GMS16C-B-115	GMS16C-C-115	11.5	0.453
GMS16C-120	GMS16C-B-120	GMS16C-C-120	12.0	0.472
GMS16C-125	GMS16C-B-125	GMS16C-C-125	12.5	0.492
GMS16C-130	GMS16C-B-130	GMS16C-C-130	13.0	0.512
GMS16C-135	GMS16C-B-135	GMS16C-C-135	13.5	0.531
GMS16C-140	GMS16C-B-140	GMS16C-C-140	14.0	0.551
GMS16C-145	GMS16C-B-145	GMS16C-C-145	14.5	0.571
GMS16C-150	GMS16C-B-150	GMS16C-C-150	15.0	0.591
GMS16C-155	GMS16C-B-155	GMS16C-C-155	15.5	0.610

\$9.80

\$9.90

\$10.10



GMC16C-155

GMC16C-B-155

GMC16C-C-155

For a seamless trim on one or both ends of the threaded barrel use item G16-CHECK.



GMS16C-C-150



GMS16C-155



GMS16C-B-115

Casting Reel Seats

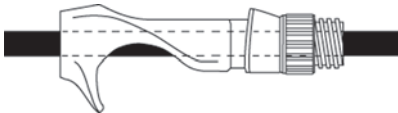
Reel Seats



GB16C-100

GRAPHITE BLANK-EXPOSED CASTING REEL SEATS

- **PACBAY** original lightweight in-line blank-thru bottom exposure reel seat. These tough graphite/nylon reel seats are up to 50% lighter than all metal seats and are warm to the touch, sensitive, and corrosion resistant.
- Blank exposure allows your trigger finger to be in direct contact with the blank for maximum sensitivity to strikes.
- I.D. increments of 0.5 mm allow for a perfect fit of the blank to the exposure hole.
- TiGrey-Nickel Alloy plating process over stainless steel hoods to match the color of our TiGrey coated guides.
- Cushioned hoods available in natural stainless steel, black, or TiGrey color.



Exposed Blank



GB16C-B-100

Size 16 Cushion Hood	Hood Color			Length		I.D.	
	Stainless Steel	Black	TiGrey	mm	inch	mm	inch
	GB16C-095	GB16C-B-095	GB16C-C-095	108.5	4.271	9.5	0.374
	GB16C-100	GB16C-B-100	GB16C-C-100	108.5	4.271	10.0	0.394
	GB16C-105	GB16C-B-105	GB16C-C-105	108.5	4.271	10.5	0.413
	GB16C-110	GB16C-B-110	GB16C-C-110	108.5	4.271	11.0	0.433
	GB16C-115	GB16C-B-115	GB16C-C-115	108.5	4.271	11.5	0.453
	GB16C-120	GB16C-B-120	GB16C-C-120	108.5	4.271	12.0	0.473
	GB16C-125	GB16C-B-125	GB16C-C-125	108.5	4.271	12.5	0.493
	GB16C-130	GB16C-B-130	GB16C-C-130	108.5	4.271	13.0	0.512

\$8.00

\$8.55

\$9.65

GRAPHITE LOW PROFILE CASTING REEL SEATS CENTERED BORE

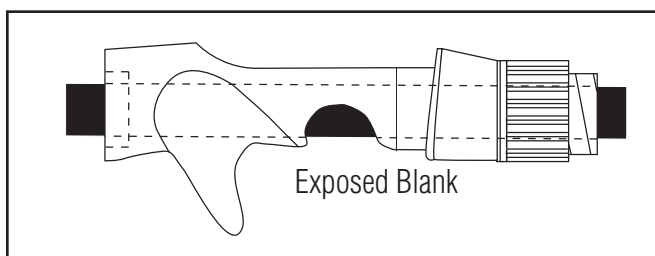
- Trigger is a molded extension of the body, providing a more comfortable, secure grip.
- These tough graphite/nylon reel seats are up to 50% lighter than all metal seats and also provide more warmth, sensitivity and corrosion resistance.
- Self-aligning stainless steel hood with keyway on body, allows faster and stronger reel mounting.
- Ribbed interior bore to assure proper bonding with blank.



GTF16 (ALL FINISHES) \$8.05
GTF17 (ALL FINISHES) \$8.80
GTF18 (ALL FINISHES) \$9.05

With Cushion	Hood Color				Length		I.D.	
	Stainless Steel	Black	Gold	TiGrey	mm	inch	mm	inch
	GTF16C	GTF16C-B	GTF16C-G	GTF16C-C	108.0	4.250	15.5	0.61
	GTF17C	GTF17C-B	GTF17C-G	GTF17C-C	120.0	4.725	17.2	0.68
	GTF18C	GTF18C-B	GTF18C-G	GTF18C-C	130.6	5.142	17.9	0.71

- I.D. increments of 0.5 mm accommodate today's most popular blank O.D.s.
- 13 I.D.s from 9.5mm to 15mm available.
- Available in three different locking stainless steel hood colors, Natural SS, TiCH, and Black
- Double contour sculpting provides outstanding grip and palming reel control with direct contact to the blank for maximum sensitivity to strikes
- Features a Soft Touch finish for a non-slip grip
- Rear grip pocket sized to fit FA-24 Arbor to mount Carbon Graphite grips
- Rear transition area has 1" OD for ease of installation and universal grip matching



Hood Color			Length		I.D.	
			MM	INCH	MM	INCH
GBX16C-095	GBX16C-B-095	GBX16C-C-095	114	4.5	9.5	0.374
GBX16C-100	GBX16C-B-100	GBX16C-C-100	114	4.5	10.0	0.394
GBX16C-105	GBX16C-B-105	GBX16C-C-105	114	4.5	10.5	0.413
GBX16C-110	GBX16C-B-110	GBX16C-C-110	114	4.5	11.0	0.433
GBX16C-115	GBX16C-B-115	GBX16C-C-115	114	4.5	11.5	0.453
GBX16C-120	GBX16C-B-120	GBX16C-C-120	114	4.5	12.0	0.473
GBX16C-125	GBX16C-B-125	GBX16C-C-125	114	4.5	12.5	0.493
GBX16C-130	GBX16C-B-130	GBX16C-C-130	114	4.5	13.0	0.512
GBX16C-135	GBX16C-B-135	GBX16C-C-135	114	4.5	13.5	0.532
GBX16C-140	GBX16C-B-140	GBX16C-C-140	114	4.5	14.0	0.552
GBX16C-145	GBX16C-B-145	GBX16C-C-145	114	4.5	14.5	0.571
GBX16C-150	GBX16C-B-150	GBX16C-C-150	114	4.5	15.0	0.591
GBX17C-170	GBX17C-B-171	GBX17C-C-172	128.5	5.0	15.7	0.618
\$13.55	\$13.80	\$14.20				

Spinning Reel Seats

SPINNING CHANNEL LOCK® ANODIZED ALUMINUM REEL SEATS (Pat.)



CLS17 (ALL FINISHES) \$25.35
CLS20 (ALL FINISHES) \$29.80

Body	B-Gold	Silver	TiGrey	Black	Black	Blue	Blue	Deep Red	Deep Red	LENGTH		I.D.		O.D.	
Hood	B-Gold	Silver	TiGrey	B-Gold	Silver	B-Gold	Silver	B-Gold	Silver	mm	inch	mm	inch	mm	inch
	CLS17-Y	CLS17-S	CLS17-C	CLS17-BY	CLS17-BS	CLS17-UY	CLS17-US	CLS17-DRY	CLS17-DRS	125.5	4.95	16.85	0.66	21.9	0.86
	CLS20-Y	CLS20-S	CLS20-C	CLS20-BY	CLS20-BS	CLS20-UY	CLS20-US	CLS20-DRY	CLS20-DRS	133.5	5.26	19.25	0.78	24.6	0.97

SPIN RINGS GRAPHITE OR ALUMINUM

- Contoured design provides both comfort and holding power.
- Sandblasted for additional smoothness to protect both cork and hands.
- Graphite spin rings are warm to the touch, even in cold weather; ideal for ice rods, especially when matched with the light, graphite composite reels popular today.
- Aluminum spin rings are formed from marine grade aluminum and anodized to prevent corrosion.
- Order two pieces to make one set.



G26H

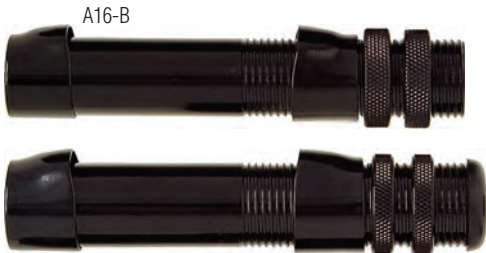


A24H-B



ITEM NO.	I.D.		FIT CORK GRIPS
	mm	inch	
G24H	23.3	0.92	LS10A-200
G26H	25.4	1.00	MS10A-260

ITEM NO.	I.D.		FIT CORK GRIPS
	mm	inch	
A22H-B	21.5	0.85	CUSTOM
A24H-B	23.3	0.92	LS10A-200
A26H-B	25.4	1.00	MS10A-260



Color	LENGTH		I.D.	
Black	mm	inch	mm	inch
A16-B	102	4.0	15.9	0.63
A18-B	102	4.0	17.1	0.67

\$1.20
\$1.20

GRAPHITE REEL SEATS WITH CUSHION

- Graphite/nylon cushion insulates reel feet, preventing electrolytic corrosion.
- Stainless, Black, TiCH and, Gold hoods
- Available with Rosewood, Jacaranda and Walnut inserts.

SIZE 16 - ALL WOODS / FINISHES = \$28.00

SIZE 17 - ALL WOODS / FINISHES = \$30.00



GR16C-B

GR17C-C

GR16C-G

Spinning Reel Seats

GWG17C (ALL FINISHES) \$21.85
GWG18C (ALL FINISHES) \$23.80

SPIN REEL SEATS WITH WOVEN GRAPHITE BODY

- Woven Graphite inserts offer a smooth clear finish to accentuate the woven materials.
- These inserts lend added sensitivity and less weight to reel seats while keeping a high-tech appearance.



GRAPHITE SKELETON REEL SEATS WITH CUSHIONED HOODS

- Combine all standard features of graphite cushioned hood reel seats and allow you to customize your own insert.
- TiGrey-Nickel Alloy plating process over stainless steel hoods to match the color of our TiGrey coated guides.
- Fits Woven Graphite or cork inserts, or customize your own cork, graphite, acrylic, or wood insert to give your rod a unique appearance.

Hood Color				LENGTH		I.D.	
Stainless steel	Black	Gold	TiGrey	mm	inch	mm	inch
G16SKIC	G16SKIC-B	G16SKIC-G	G16SKIC-C	66	2.6	15.5	0.61
G17SKIC	G17SKIC-B	G17SKIC-G	G17SKIC-C	70	2.75	17.7	0.7
G18SKIC	G18SKIC-B	G18SKIC-G	G18SKIC-C	82	3.24	17.9	0.71

G16SKIC (ALL FINISHES) \$8.95
G17SKIC (ALL FINISHES) \$11.00
G18SKIC (ALL FINISHES) \$12.30

GRAPHITE REEL SEATS WITH CUSHION

- Graphite/nylon cushion insulates reel feet, preventing electrolytic corrosion.
- TiGrey-Nickel Alloy plating process over stainless steel hoods to match the color of our TiGrey coated guides.
- G32C-S hoods are chromed.
- G32C cushion is designed to shield the hood opening only.

Hood Color				LENGTH		I.D.	
Stainless steel	Black	Gold	TiGrey	mm	inch	mm	inch
G16C	G16C-B	G16C-G	G16C-C	102	4.0	15.5	0.61
G17C	G17C-B	G17C-G	G17C-C	114	4.5	17.7	0.70
G18C	G18C-B	G18C-G	G18C-C	127	5.0	17.9	0.71
G20C	G20C-B	G20C-G	G20C-C	127	5.0	19.8	0.78
G22C	G22C-B	G22C-G	G22C-C	127	5.0	21.8	0.86
G24C	G24C-B		G24C-C	142	5.6	23.8	0.94
G26C	G26C-B		G26C-C	142	5.6	26.2	1.03
G32C-S	G32C-B		G32C-C	142	5.6	32.0	1.26



CI16A-200 \$9.35
CI17A-250 \$10.25

Woven Graphite	Hood Color				LENGTH		I.D.	
	Stainless Steel	Black	Gold	TiGrey	mm	inch	mm	inch
	GWG17C	GWG17C-B	GWG17C-G	GWG17C-C	114	4.5	15.8	0.620
	GWG18C	GWG18C-B	GWG18C-G	GWG18C-C	127	5.0	16.6	0.655

INSERT ONLY				
Length mm	OD of body mm	OD of tenon mm	ITEM NO.	Description
106.6	19.9	16.8	GWGI17	Woven Graphite
121.8	21.2	17.8	GWGI18	
100.8	18.3	15.0	CI16A-200	Cork
104.8	19.8	17.0	CI17A-250	Cork



CI16A-200 (SHOWN WITH G16SKIC-C SKELETON)



G17C-B



G16C (ALL FINISHES) \$10.35
G17C (ALL FINISHES) \$13.45
G18C (ALL FINISHES) \$13.45
G20C (ALL FINISHES) \$13.45
G22C (ALL FINISHES) \$13.45
G24C (ALL FINISHES) \$16.80
G26C (ALL FINISHES) \$23.50
G32C (ALL FINISHES) \$24.65

- Graphite cushioned stainless hoods firmly secures reel feet and prevents electrolytic corrosion
- ECRS trigger casting seats available with blank exposure for direct finger to blank contact
- Ribbed I.D.'s for better glue bonding (not available in models with molded arbor design)
- Light weight and durable graphite/nylon body composition
- Hoods available in silver, black, holographic and blue
- Self-aligning hood/nut assembly



Colored Spinning Seat



CRSD-16 (BL) \$14.80

CRSD-17 (BLACK) \$7.85

CRSD-18 (BLACK) \$8.00

Blue	I.D	Legnth
CRSD-16BL	0.630"	4.33"
CRSD-18BL	0.709"	4.92"
CRSD-20BL	0.788"	5.12"
CRSD-22BL	0.850"	5.12"



Colored Trigger Reel Seat



\$14.80

Blue	I.D	Legnth
SCRSD-16BL	0.630"	4.33"

AERO Spinning Reel Seats With Comfort Finish

American Tackle's new comfort finish reel seats ensure a positive grip during long hours on the water. Perfect for fishing in cold weather. Offered in the Ergonomic spinning/casting "AERO" seat. Be sure you feel the bite and stay productive on the water with these great new seats.

- Ergonomic design for added leverage and fatigue-free comfort
- Features American Tackle's exclusive "Comfort Finish"
- Now available in black or stainless hoods

AERO
COMFORT FINISH REEL SEAT

Model #	Finish	I.D.	Rear O.D.	Hood	Length
AERO-16CF	Comfort Finish	.615"	.99"	Stainless	4.60"
AERO-16CF-B	Comfort Finish	.615"	.99"	Black	4.60"

AERO-16CF (ALL FINISHES) \$21.50

AERO-17CF	Comfort Finish	.673"	1.10"	Stainless	5.25"
AERO-17CF-B	Comfort Finish	.673"	1.10"	Black	5.25"

AERO-17CF (ALL FINISHES) \$22.15



AERO-16CF-B

AERO-17CF



GRAPHITE

REEL SEATS

Exclusive Uni-Hood & Uni-Lock Hood

Premium Graphite Body Construction

Ergonomic Design Available In Both Spinning & Casting

1K, 3K, or Bushido Carbon Inserts Available

G2 WAVE WAVE-16

\$8.00

G2 VIBE VIBE-16-ULH

\$8.00

G2 APEX APEX-16

\$12.15

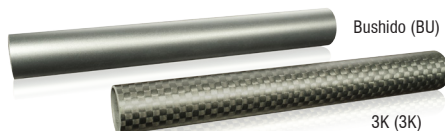
G2 X2 X2-16-ULH

\$8.00

G2 EDGE EDGE-16

\$8.00

G2 Reel Seat Inserts



Bushido	3K	Fits Reel Seat
RSI-2-BU	RSI-2-3K	Vibe & Wave Seats
RSI-1-BU	RSI-1-3K	Apex, X2 & Edge Seats

RSI-1-1K	\$13.75
RSI-1-3K	\$11.25
RSI-1-BU	\$8.75
RSI-2-1K	\$13.75
RSI-2-3K	\$11.25
RSI-2-BU	\$8.75

Item #	I.D.	Rear O.D.	Length	Tenon L.	Tenon O.D.
WAVE-16	.610"	1.10"	5.73"	.780"	.703"
WAVE-16-ULH	.610"	1.10"	5.73"	.780"	.703"
X2-16	.60"	1.10"	4.46"	---	---
X2-16-ULH	.60"	1.10"	4.46"	---	---
APEX-16	.60"	.710"	4.85"	---	---
APEX-16-ULH	.60"	.710"	4.85"	---	---
EDGE-16	.60"	1.05"	4.74"	---	---
EDGE-16-ULH	.60"	1.05"	4.74"	---	---
VIBE-16	.610"	1.10"	4.31"	---	---
VIBE-16-ULH	.610"	1.10"	4.31"	---	---



Reel Seat Rear Grips

- EVA and cork combination options
- Tapered and contoured grip designs

Item #	Material	Grade	Length	O.D.	I.D.	Cut I.D.	Cut Depth
SPG190R-C	Cork	AAA	1.90"	1.12"	.340"	.70"	.79"
SPG190R-E	EVA	N/A	1.90"	1.12"	.340"	.70"	.79"
SPG390R-C	Cork	AAA	3.90"	1.12"	.340"	.70"	.79"
SPG390R-E	EVA	N/A	3.90"	1.12"	.340"	.70"	.79"

Fore Grips for G2 seats with Uni-Lock Hood (ULH)

Item #	Material	Grade	Length	O.D.	I.D.	Cut I.D.	Cut Depth
SG125F-C	Cork	AAA	1.25"	1.00"	.50"	.84"	1.00"
SG125F-E	EVA	N/A	1.25"	1.00"	.50"	.84"	1.00"

SPG190R-C	\$11.60
SPG190R-E	\$3.75
SPG390R-C	\$21.25
SPG390R-E	\$4.60
SG125F-C	\$10.95
SG125F-E	\$3.45



SPG390R-E

*REEL SEATS NOT INCLUDED



SPG190R-C



SG125F-C