

ALUMINUM GIMBALS

- Solid aluminum up to 50% lighter than brass gimbals.
- Anodized to prevent corrosion.
- Curved vertical slot for improved leverage in rod belts with vertical pin. Scored inside for better adhesion to blank.
- Rounded bottom for use with fighting belts not including gimbal pins.
- Fits snugly into butt caps BCL26 or BCL28.



AG24 \$13.55 each

AG27 \$17.45 each

Color							LENGTH		I.D.		O.D.		DEPTH		USE WITH BUTT CAP
Gold	Silver	TiCH	Green	Deep Red	Blue	Black	mm	inch	mm	inch	mm	in	mm	in	
AG24-G	AG24-S	AG24-C	AG24-GR	AG24-DR	AG24-U	AG24-B	57.0	2.25	23.8	0.94	26.8	1.06	34.9	1.38	BCL26
AG27-G	AG27-S	AG27-C	AG27-GR	AG27-DR	AG27-U	AG27-B	64.0	2.50	27.2	1.07	31.5	1.24	41.3	1.63	BCL28



FIGHTING BUTTS HEAVY DUTY ALUMINUM

- Heavy duty design for large gamefish.
- Heavy duty anodized aluminum body with rubber cushion.
- Scored inside for better adhesion to blank.

AF2 \$14.40 each

RUBBER CAP FOR AF2



ITEM NO.
AF2-RC

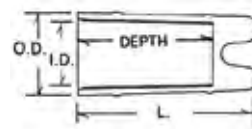
AF2-RC \$2.80 each



Titanium	Black	Gold	Silver	TiCH	Green	Red	Blue
AF2-T	AF2-B	AF2-G	AF2-S	AF2-C	AF2-GR	AF2-R	AF2-U

GRAPHITE GIMBALS

- Made of durable black graphite/nylon compound - up to 75% lighter than brass gimbals.
- Ribbed inside for firmer bonding. Can be used with our detachable butt caps.



ITEM NO.	LENGTH		I.D.		O.D.		DEPTH		USE WITH BUTT CAP
	mm	inch	mm	inch	mm	inch	mm	inch	
GG21B	45.0	1.77	20.6	0.81	24.0	0.95	34.9	1.38	BCM22
GG23B	57.0	2.24	22.5	0.89	26.7	1.05	41.3	1.63	BCL24
GG28B	71.7	2.82	27.5	1.08	30.7	1.21	56.9	2.24	BCL28

GG21B = \$2.50 ea

GG23B = \$2.50 ea

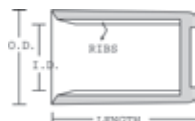
GG28B = \$3.10 ea

Fighting Butts, Caps & Covers

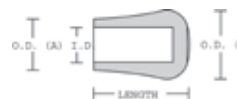
BUTT CAP / GIMBAL COVERS

- Made of a durable and flexible rubber/vinyl compound with a black textured outer surface.
- Fits the butt end to cushion and protect the rod from becoming soiled or damaged.
- Inside walls are ribbed for firmer bonding to blank or rear grip arbors. The ribs also ensure an ideal fit when butt caps are used as gimbals covers.

BCM, BCL



BC, GBC



ITEM NO.	LENGTH		I.D.		O.D.		fits grip & gimbal models
	mm	inch	mm	inch	mm	inch	
BCS16B	16.5	0.65	15.9	0.63	21.1	0.83	CUSTOM
BCS20B	25.4	1.00	19.8	0.78	25.4	1.00	RB5, RB8, RB9, cork
BCS25B	25.4	1.00	25.4	1.00	30.5	1.20	RB11, RB13, RB14
BCM20B	51.0	2.00	20.0	0.79	32.5	1.28	CUSTOM
BCM22B	51.0	2.00	22.0	0.87	32.5	1.28	GG21B
BCM24B	51.0	2.00	24.0	0.94	32.5	1.28	CUSTOM
BCM26B	51.0	2.00	26.0	1.02	32.5	1.28	CUSTOM
BCL20B	76.0	3.00	20.0	0.79	35.0	1.38	CUSTOM
BCL22B	76.0	3.00	22.0	0.87	35.0	1.38	CUSTOM
BCL24B	76.0	3.00	24.0	0.94	35.0	1.38	GG23B
BCL26B	76.0	3.00	26.0	1.02	35.0	1.38	CUSTOM
BCL28B	76.0	3.00	28.0	1.10	37.0	1.46	GG28B, AG27
BC19B	40.8	1.61	17.8	0.70	23.6/34.0	1.34/0.93	CUSTOM
BC20B	40.8	1.61	18.8	0.70	23.6/34.0	1.34/0.93	CUSTOM
GBC22B	48.7	1.92	24.2	0.95	30.2/37.0	1.46/1.19	GG21B
GBC23B	48.7	1.92	25.1	0.99	30.2/37.0	1.46/1.19	GG23B
GBC24B	48.7	1.92	26.2	1.03	30.2/37.0	1.46/1.19	AG24
GBC28B	56.8	2.24	29.2	1.15	34.0/37.8	1.49/1.34	GG28B, AG27

\$0.75 ea

\$3.25 ea

\$3.50 ea

\$4.40 ea



**RENZETTI BUTT CAPS \$23.00 EACH
ISLANDER GOLD, BLUE, BLACK
& SILVER WITH GOLD TRIM**



BCL28B



BC20B-CCHD

COMPOSITE CORK BUTT CAPS

- Made of a durable and flexible composite cork compound.
- Fits the butt end to cushion and protect the rod from becoming soiled or damaged.

\$4.40

ITEM NO.	LENGTH		I.D.		O.D.		Fits Grips
	mm	inch	mm	inch	mm	inch	
BC20B-CCHD	27.1	1.07	19.7	0.76	32.3	1.27	RB5, RB8, RB9, all cork with tenon except SR15A-575

\$4.40

BC25-CCHD	25.3	1.00	25.8	1.02	31.5	1.24	RB11, RB13, RB14, SR15A-575
-----------	------	------	------	------	------	------	-----------------------------



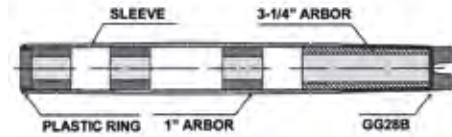
BC25-CCHD

MODELS DLSS

DURALITE BUTT SLEEVE ASSEMBLY

- DuraLite Butt Sleeve assembly includes the sleeve, top ring, gimbal, three grooved arbors, and one tapered grooved arbor for connecting the gimbal to the sleeve.
- DuraLite butt sleeves, caps, and gimbals are manufactured from a light weight fiberglass-reinforced Nylon 66 material.
- The 3¼" grooved arbor is tapered for a secure fit connecting the sleeve with our GG28B gimbal.
- Super-light grooved arbors (I.D. 16mm) are made of polyurethane and can be reamed to larger sizes to fit a wide variety of blank diameters.

ITEM NO.	LENGTH		SLEEVE I.D. mm		O.D. mm	
	mm	inch	mm	inch	mm	inch
DLSS1	277.8	10-15/16"	27.1	1.067	31	1.220
DLSS2	341.3	13-7/16"	27.1	1.067	31	1.220
DLSS3	379.4	14-15/16"	27.1	1.067	31	1.220



DLSS1 \$24.30

DLSS2 \$26.70

DLSS3 \$30.40

DLSS3



MODELS DLS

DURALITE BUTT SLEEVE

We offer our DuraLite Butt Sleeve by itself for use in building larger diameter rods without the need for arbors.

ITEM NO.	LENGTH		I.D.		O.D.	
	mm	inch	mm	inch	mm	inch
DLS1	203.2	8.0	27.1	1.067	31	1.220
DLS2	266.7	10.5	27.1	1.067	31	1.220
DLS3	317.5	12.5	27.1	1.067	31	1.220



DLS3

DLS1 \$9.80

DLS2 \$12.75

DLS3 \$15.55

